

Phil Hardberger Park

Common Year-round Birds

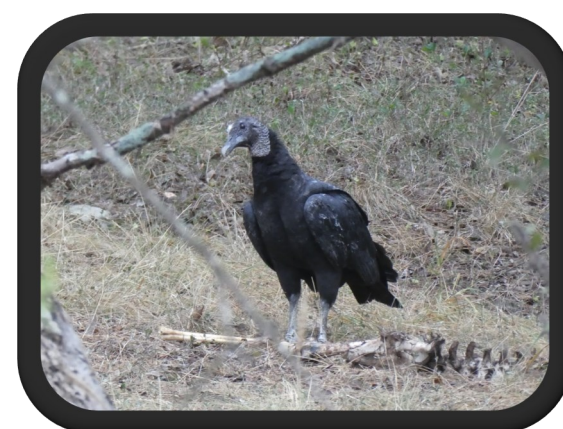
Although over 165 bird species have been documented on eBird as being seen at Phil Hardberger Park, only about 16% of them are here year-round. Photos of 21 birds commonly seen at the park throughout the year are shown on this poster.



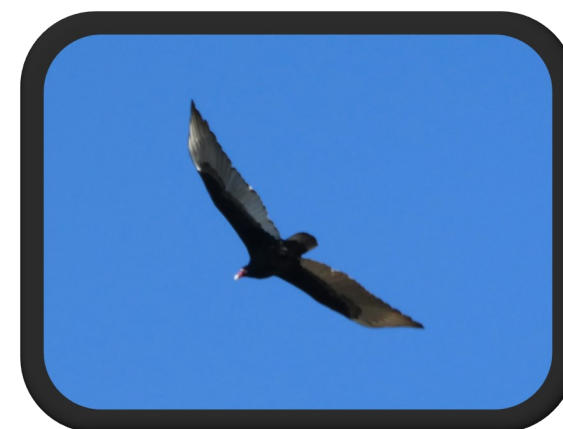
White-winged Dove



Mourning Dove



Black Vulture



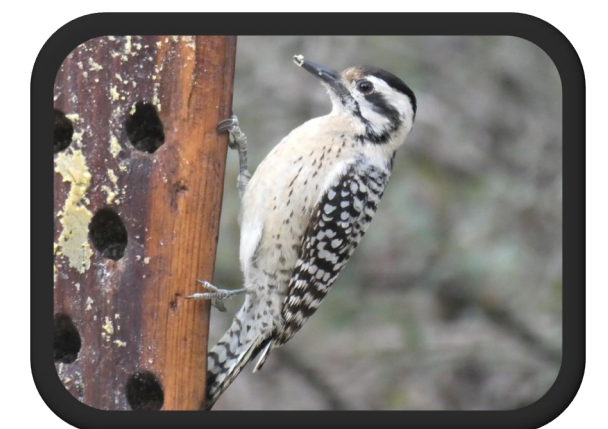
Turkey Vulture



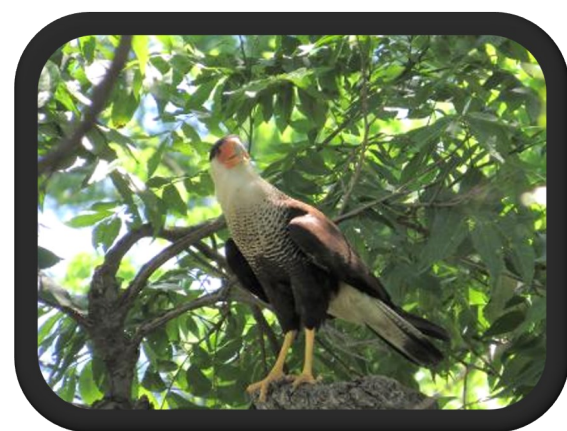
Red-shouldered Hawk



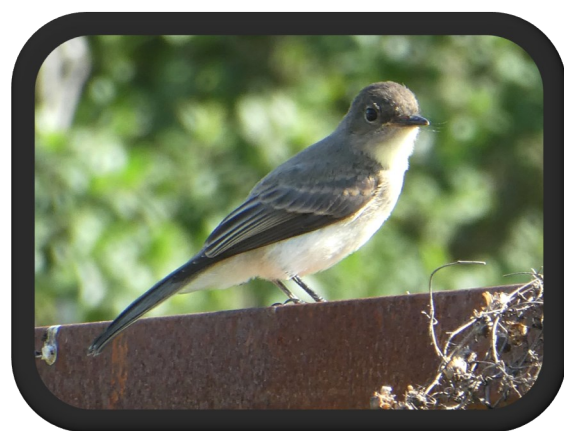
Golden-fronted Woodpecker



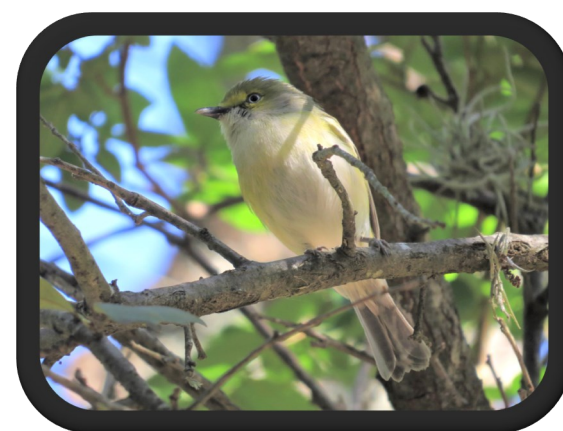
Ladder-backed Woodpecker



Crested Caracara



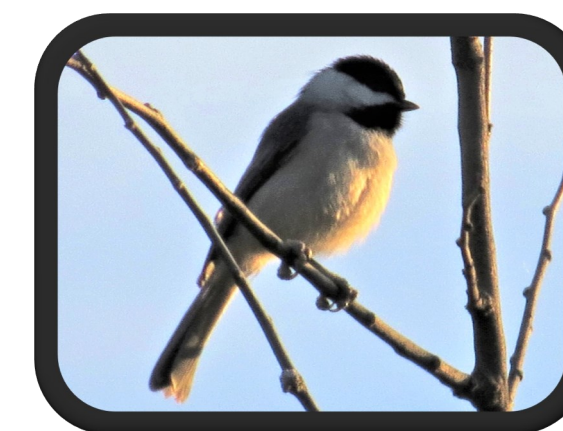
Eastern Phoebe



White-eyed Vireo



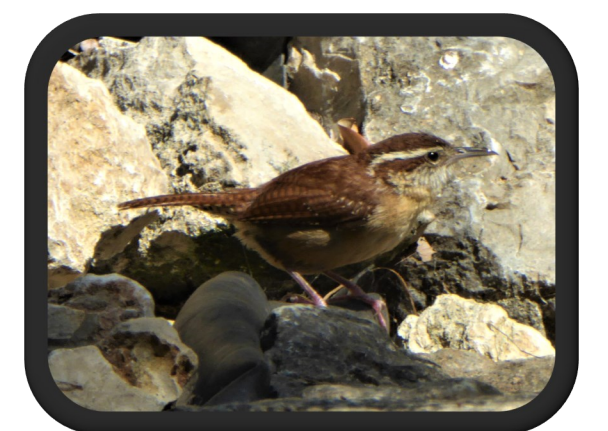
Blue Jay



Carolina Chickadee



Black-crested Titmouse



Carolina Wren



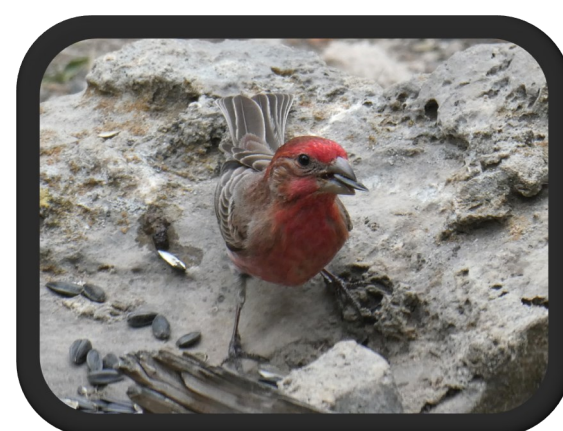
Bewick's Wren



Northern Mockingbird



House Sparrow



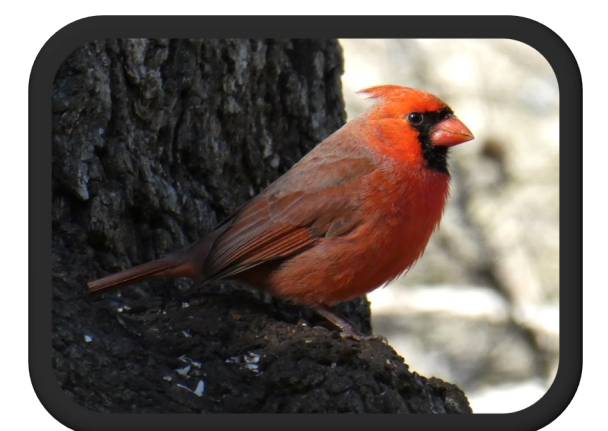
House Finch



Lesser Goldfinch



Great-tailed Grackle



Northern Cardinal

Thank you to the following for their contributions: Photos 8, 10-12, 17 by Lora Reynolds. Photos 6, 14 by Alan Kuentz. Photos 1-5, 7, 9, 13, 15, 16, 18-21 by Patsy Kuentz. Poster design donated by Lora Reynolds. Printing donated by Alan and Patsy Kuentz.